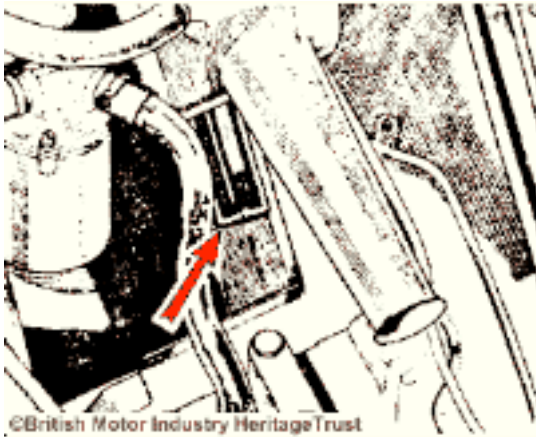


Vehicle Number



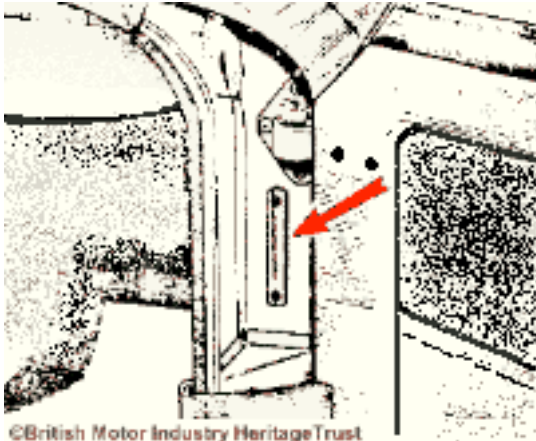
Stamped on a plate secured to the left hand inner wheel arch

Engine Number



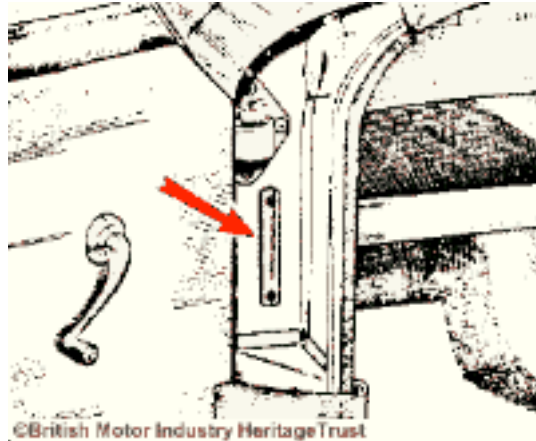
Stamped on a plate secured to the right hand side of the engine block

Body Number (Mk I)



Stamped on a plate secured to the front right hand door pillar. Similar plate on left hand pillar is of unknown relevance.

Body Number (Mk II - IV)



Stamped on a plate secured to the front left hand door pillar

Engine Numbers		
First Prefix: Engine Size, Make & Type (e.g. 12CE)		
9 - 900cc to 999cc 10 - 1000cc to 1099cc 12 - 1200 to 1299cc	C - Austin Healey Sprite / MG Midget	Additional letter (if present) denotes series
Second Prefix: Gearbox and Ancillaries (e.g. Da)		
Da - Close Ratio Center Change Gearbox U - Mk I only, also designated Close Ratio Center Change Gearbox, may have denoted the "smooth cased" boxes used on the early cars.		
Third Prefix: Compression (e.g. H)		
H - High Compression L - Low Compression		
Full Example: 12CG / Da / H101		
12CG - 1275 AHS or Midget engine series G	Da - Close Ratio Center Change Gearbox	H101 - High Compression, serial number 101

Note. An Engine series letter change often denoted major changes to the internal components of the engine. For example, the 1098cc units were either 10CG (Early Cars), or 10CC (Later Cars). This series change included a modification to overcome a problem with crankshafts breaking in service: The main bearing size was increased from 1.75" in the 10CG cars to 2" in the 10CC cars.

Vehicle Numbers

First Prefix Group: Make (e.g. A)

A - Austin **G** - M.G. **H** - Austin Healey **YH** - Austin Healey (Australian CKD) **YG** - M.G. (Australian CKD)

Second Prefix Group: Engine Type, Body Type and Series (e.g. AN10)

A - A Series Engine (was also used on 1500 M.G. Midget)	N - 2 Seater Tourer	<ul style="list-style-type: none"> • 3 - M.G. Midget Mark I • 4 - M.G. Midget Mark II • 5 - M.G. Midget Mark III or • 5 - AH Sprite Mark I • 6 - AH Sprite Mark II • 7 - AH Sprite Mark II (1100cc) • 8 - AH Sprite Mark III • 9 - AH Sprite Mark IV • 10 - AH Sprite Mark IV (Post face-lift) or • 10 - Austin Sprite Mark IV
--	----------------------------	--

Third Prefix: Overseas Models (if not RHD)

- **U** - USA & Canada
- **L** - Left Hand Drive

Fourth Prefix: Model Year (USA & Canada M.G Midgets Only following the U)

A - 1970 through to **M** - 1980

First Suffix: Assembly Plant

- **G** - Abingdon (M.G. Assembly Plant)
- **M** - Cowley (Morris Assembly Plant)

Full Example: A-AN10 - 87268 G

A - Austin	AN10 - A series engine, 2 seater tourer, production series 10 (Sprite MK IV)	87268 - Car number 87268	G - Assembled at Abingdon
-------------------	---	---------------------------------	----------------------------------

Notes:

British built Mk I Sprites did not have the first prefix H at all and were simply labelled AN5, however the equivalent Australian CKD cars all carried the YH Prefix.

Car Identification

Austin - Healey Sprite

Model		Starts	Finishes
Sprite Mk I Announced: 20/5/58	Engine No: Car No:	9C / U / H101 H-AN5-501	9C / U / H49201 H-AN5-50116
Sprite Mk II Announced: May '61	Engine No: Car No:	9CGDa / H 101 H-AN6-101	9CGDa / H36711 H-AN6-24731

Sprite Mk II (1100) Announced: October '62	Engine No: Car No:	10CG 101 H-AN7-24732	10CC 21048 H-AN7-38828
Sprite Mk III Announced: Mar '64	Engine No: Car No:	10CC / Da / H101 H-AN8-38829	10CG / Da / H163000 H-AN8-64734
Sprite Mk IV Announced: October '66	Engine No: Car No:	12CC / Da / H101 12CE / Da / H101 12CG / Da / H101 H-AN9-64735	12CC / Da / H163000 Not Available Not available H-AN9-85286
Sprite Mk V (IV) Announced: October '69	Engine No: Car No:	12CC / Da / H101 12CE / Da / H101 12CG / Da / H101 H-AN10-85287	12CC / Da / H163000 Not Available Not available H-AN10-86403

Austin Sprite

Model	Engine No: Car No:	Starts	Finishes
Sprite Mk IV (V) Announced: January '71	Engine No: Car No:	12CE / Da / H101 12CG / Da / H101 A-AN10-86804	Not Available Not Available A-AN10-87824

(c) Mick. S. Maguire M.I.E.E.E